

# **Wireless Presentation System Quick Installation Guide**

(Model Name: WPS-710)

Version: 1.00

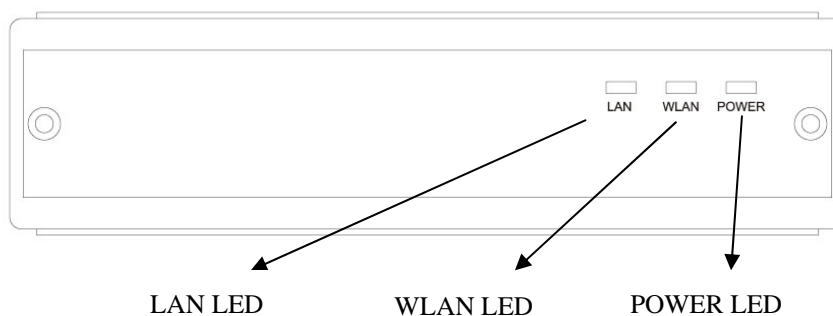
Date: June 12, 2007

## 1. Package Contents

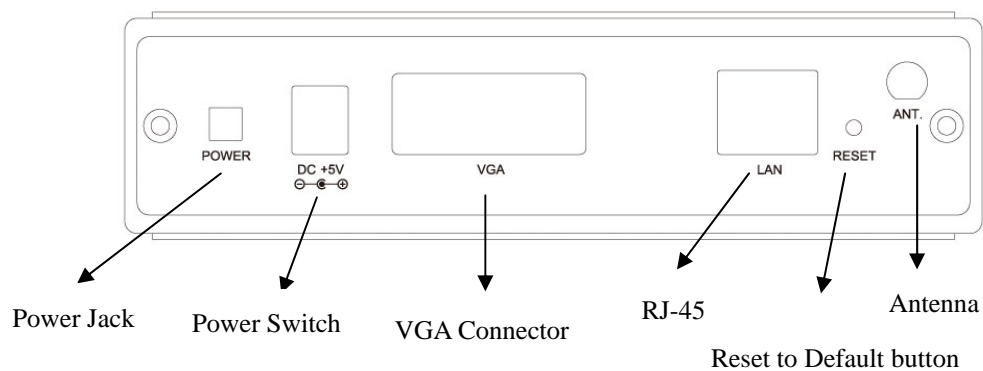
- WPS-710 Box
- Power Adapter (DC +5V, 2.5A)
- CD-ROM with User's Manual inside.
- Quick Installation Guide
- Warranty Card

## 2. Physical Details

- Front Panel

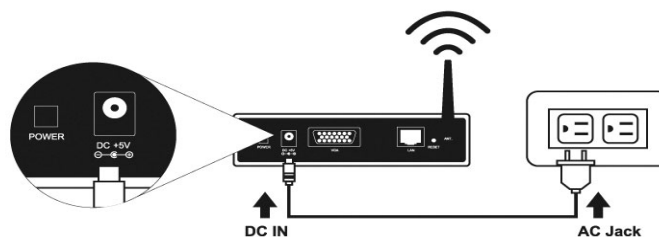


- Rear Panel

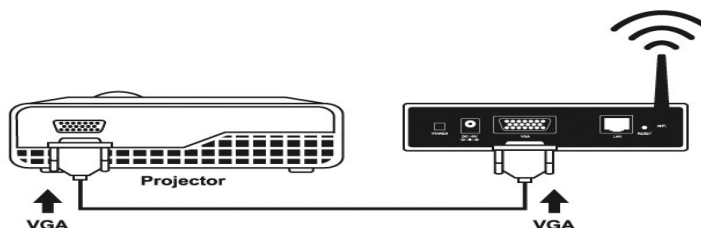


## 3. Installation

- 1) Connect power adapter DC plug to WPS-710 DC jack and other side to AC jack..



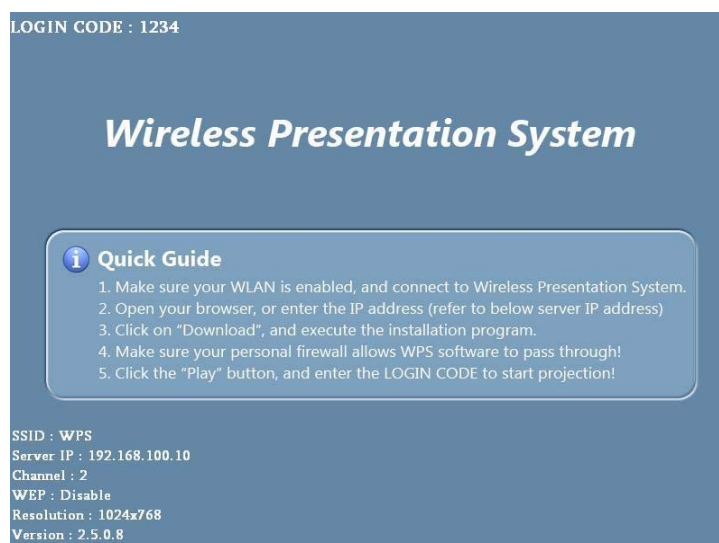
- 2) Connect Projector's VGA cable to WPS-710 VGA connector on the rear panel.



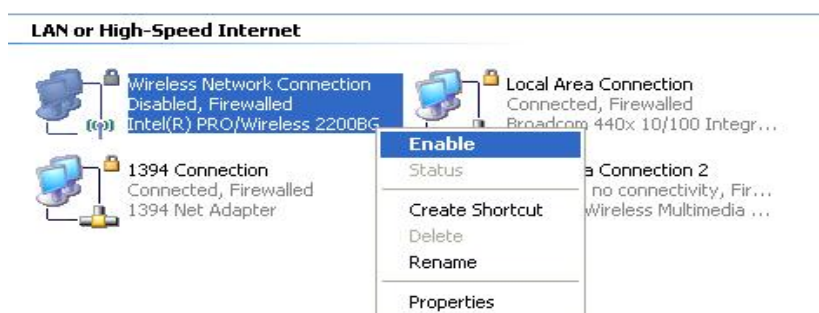
- 3) Turn on projector.
- 4) Turn on WPS-710 box
- ◆ After system ready, the "POWER" LED and "WLAN" LED will be yellow color. The "LAN" LED will be off.
  - ◆ When LAN connection is established, then "LAN" LED will be yellow color and blinking while data transmission.

## 4. Setup

- 1) If you see below picture on the projector screen menu, it indicates your WPS-710 box is ready now.

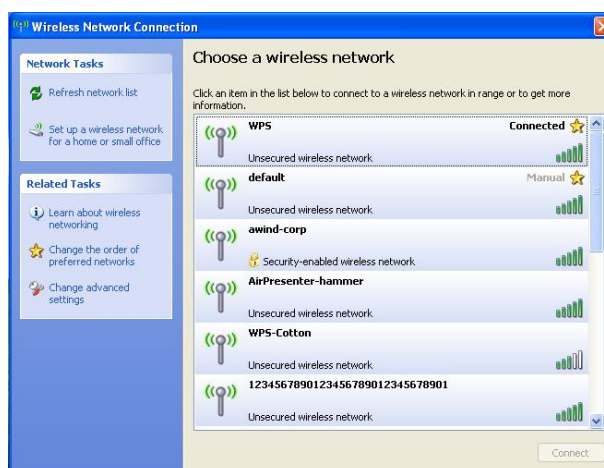


2) Make sure your PC WLAN card is enabled..



3) Connect your PC to WPS-710 box.

- ◆ Connect PC WLAN card to WPS-710 box, as below.:

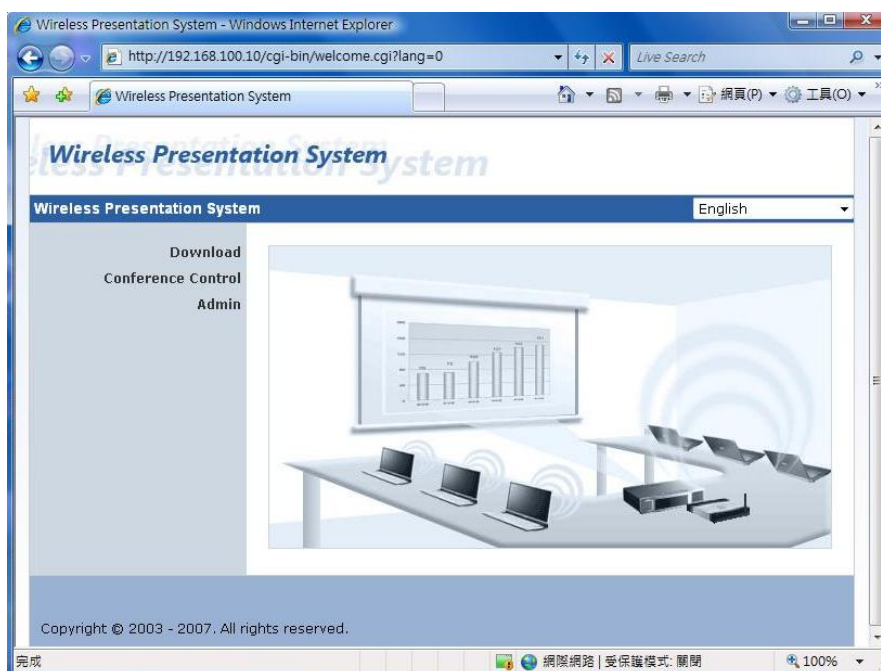


4) Open browser directly, or enter the IP address to get in WPS-710 web home page.

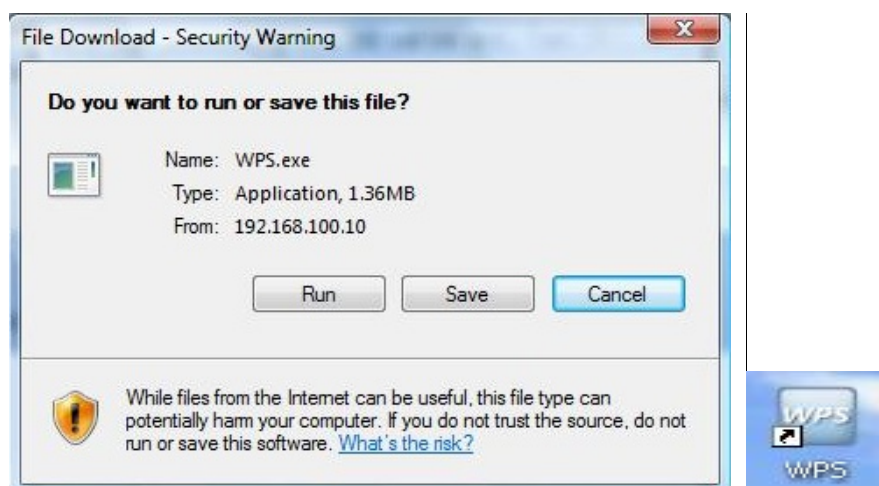
- ◆ The default IP address is **192.168.100.10**
- ◆ Or refer to the IP address which shown on the projector screen.



5) After you get **Home** page successfully, then below screen shown up.



- 6) Click on “**Download Software**”, and execute the installation program.
- ◆ Press “**Login**” button to download software, the default password is blank.
  - ◆ You may execute this program directly or save it and then perform it later.
  - ◆ After install the program, this software shortcut comes out on the PC screen.



- 7) Make sure your personal **firewall** allows WPS-710 software to pass through.
- When you see below dialog box, just click “**Unblock**” to allow firewall to add this program on the exception list automatically.
- 8) After you installation completed, this program will execute directly and search WPS-710 box automatically, when box founded then a “**LOGIN CODE**” dialog box comes out. Just enter the **LOGIN CODE** to start projection !
- ◆ You can see login code on the projector screen.

