



PPbox User's Manual

(Model: DHP-3020B)

Version: 1.1
Date: June 30, 2008

Table of Contents

<i>1</i>	<i>Overview</i>	<i>3</i>
<i>2</i>	<i>Physical Details</i>	<i>4</i>
<i>3</i>	<i>Install PPbox</i>	<i>4</i>
<i>4</i>	<i>Using PPbox</i>	<i>6</i>
<i>5</i>	<i>Client Utility</i>	<i>12</i>
<i>6</i>	<i>Web Management.....</i>	<i>14</i>
<i>7</i>	<i>Appendix: PPbox Remote Control.....</i>	<i>21</i>

1 Overview

PPbox is a revolutionary digital home solution for those who have LCD TVs or projectors, as well as personal computers with networking connection. PPbox provides enterprise-level network auto-configuration capability, and thus is very easy to configure and setup.

PPbox has built-in P2P TV service which delivers over 500 free channels anytime. Besides P2P TV, PPbox also works as a super DMA, or Digital Media Adaptor, which seamlessly bridges your PC to your LCD TV or projector in your living room. PPbox gives you easy access to your photos, videos, and music files stored on your PC, and share them with your family and friends on the big screen. You can also operate your PC on TV with the remote control or via standard USB mouse and keyboard.

With its advanced processor and networking performance, PPbox is a perfect companion for high-definition TVs. PPbox smoothly plays 720p HD videos via WiFi connection, and up to 1080p via Ethernet.

Features

- P2PTV
 - Free P2P TV service from the Internet.
- MyTheatre
 - MyPhoto
 - ◆ The easiest way to enjoy your PC photos in front of big screens
 - ◆ Super fast decoding and rotation
 - ◆ Support any resolution of pictures
 - ◆ Live directory thumbnails
 - ◆ Root directory can be configured to any disk/folder
 - MyVideo
 - ◆ A high-performance HD video decoder that smoothly plays 720p videos through WiFi, 1080p videos through Ethernet for Mpeg1, Mpeg2, WMV9, Xvid, and DivX formats
 - ◆ Fast switching to different PCs
 - ◆ Support video thumbnails
 - ◆ Root directory can be configured to any disk/folder
 - MyMusic
 - ◆ Support mp3, wma, and wav files.
 - ◆ Support ID3 song information and album pictures.

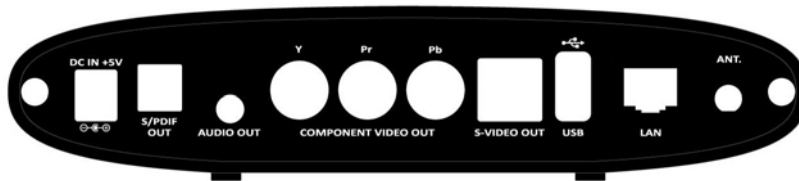
- ◆ Root directory can be configured to any disk/folder
- ◆ Sequential and shuffle play
- Wireless Access Point
 - PPbox itself is a wireless access point. You may use it to access the internet by connecting your LAN cable to PPbox.

2 Physical Details

Front View



Rear Panel



3 Install PPbox

- .1. Connect the power adaptor to your PPbox, and plug the adaptor to your power outlet.
- .2. Connect the YPbPr Component output or S-video output on the PPbox to your TV or projector, and turn on your projector or TV.
- .3. Plug your LAN cable into PPbox if you want to use it as a wireless access point (AP).
- .4. Turn on PPbox box. The Main Menu as below will be shown on your TV screen while system is ready.

(Click the Info button on PPbox Remote to check system info.)



.5. Make sure your PC WLAN or LAN interface is enabled and connect your PC to PPbox (wireless default SSID is PPBOX).

.6. Install PPbox software from the CD-ROM.

(Make sure this application is allowed to pass your personal firewall.)

.7. Launch PPbox utility. The PPbox application automatically will search for a PPbox server and will establish connection automatically.

If there are more than one PPbox servers, you can select specific server to connect which as shown below.

Please use the PPbox Remote to control the functions in PPbox. For more information, please refer to the appendix.

4 Using PPbox

➤ P2PTV

To use P2PTV, you need to have PPLive software installed on your computer. Please download the software from PPLive website <http://www.pplive.com>.

Select P2PTV from the Main Menu to access P2PTV service.

(Please note that you need to be connected to the internet to watch programs from P2PTV. You may plug your LAN cable to either PPbox or your computer.)

Use the left and right buttons on the remote control to change categories, and use the up and down buttons to browse through programs in the selected category. When you find a program to watch, please click the ENTER button. The buffer info is shown on screen. When the buffer is full, the program will begin automatically. The buffer time depends on your internet connection speed, usually the process takes less than 30 seconds.



➤ MyTheatre

Select MyTheatre to playback your multimedia files which are stored in your PC (Media Library) or attached USB storage (USB).



➤ Media Library

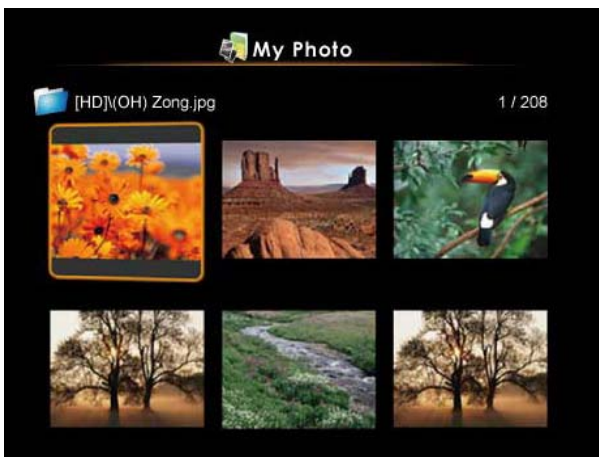
PPbox automatically filters files on your PC and re-arranges them for easy access on TV. You may specify which folders PPbox should look for your multimedia files. The default folders are as follows:

- Video: My Documents\My Videos
- Photo: My Documents\My Photos
- Music: My Documents\My Music

Please right-click on the PPbox icon on System Tray and select MyTheatre Settings to change settings for MyTheatre.



◆ My Photo:



◆ My Video:



◆ My Music:



➤ **USB**

PPbox automatically filters files on your USB storage the same way as for files on your PC. Plug your USB storage into any of the USB ports on PPbox, select which media type to use (photo/video/music), and use the remote control to browse the storage for files matching the media type you selected.

◆ My Photo



◆ My Video



◆ My Music



5 Client Utility

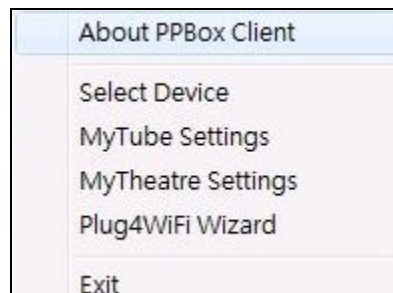
5.1. Starting Program

After you installed PPbox client from CD, please follow the steps below to begin:

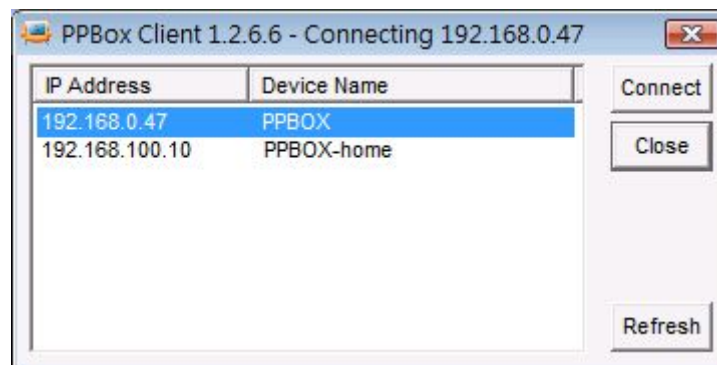
- ◆ Connect to your PPbox device via network.
- ◆ Double-click the PPbox shortcut on your Desktop.
- ◆ The PPbox client will automatically connect to PPbox. If there is more than one PPbox found, the client will list the devices for you to choose.

5.2. Change Settings

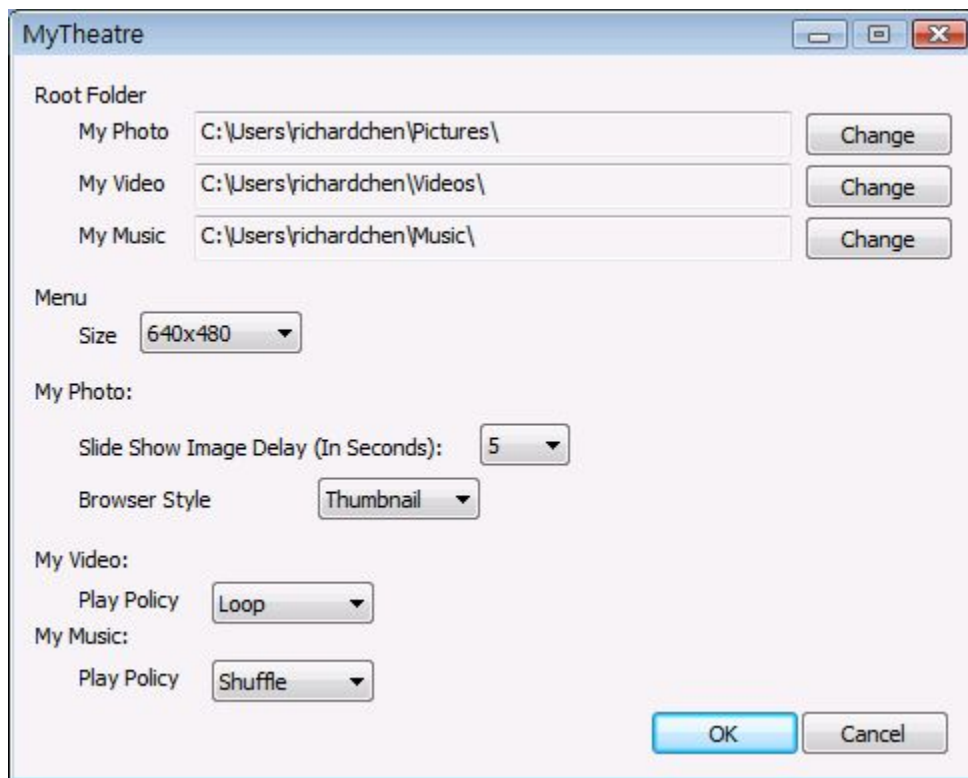
- ◆ Right-click on the tray icon  to bring up the menu.



- ◆ Click <**Select Device**> to change to another PPbox.



- ◆ Click <**MyTheatre Settings**> to change your default folders and play policy for music and videos.



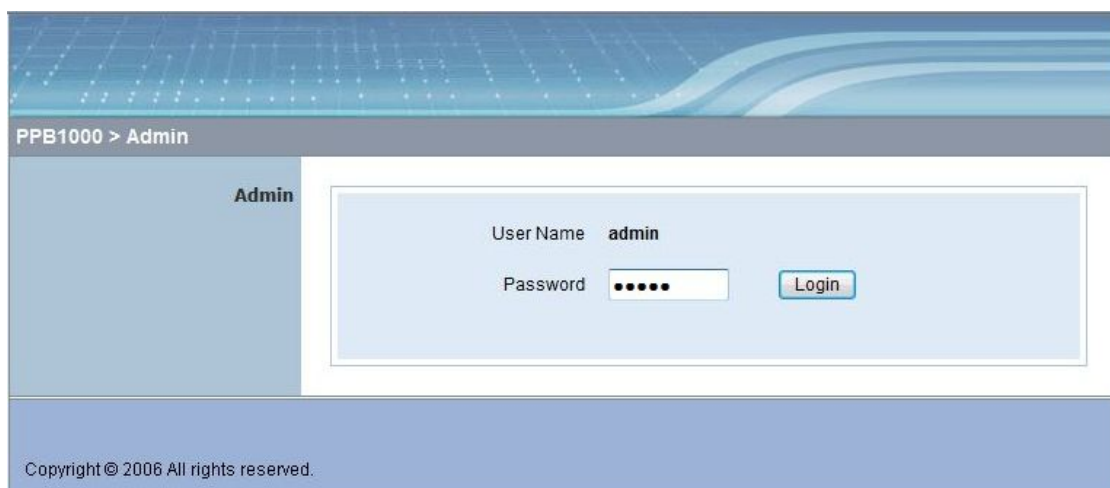
6 Web Management

6.1. Home Page

- ◆ Make sure your PC is connected to PPbox.
- ◆ Look for the IP address of PPbox in the Select Device window.
- ◆ Open your browser and enter the IP address of the box.
- ◆ The default IP is 192.168.100.10 if not connected to LAN.



6.2. Login Web Admin



- ◆ Click [**Admin**] and then enter password to login web page.
- ◆ The password default value is "admin".

6.3. System Status

PPB1000 > Admin > System Status Logout »

System Status	Model Name	PPB1000
Network Setup	Versions	
Projection Setup	Firmware Version	0.0.19.14
Change Passwords	Network Status	
Reset to Default	IP Address	192.168.168.93
Firmware Upgrade	Subnet Mask	255.255.255.0
Reboot System	Default Gateway	192.168.168.251
	Wireless MAC Address	00:16:44:CC:EE:23
	Wire MAC Address	00:12:5F:00:1E:03
	Connection Status	
	Projecting Status	Waiting for Projecting
	Total Users	2

Copyright © 2006 All rights reserved.

*** Click **[System Status]**, shows current system status.

Model Name: Product model name

Versions:

- ◆ Firmware version no.: Product firmware version number.
- ◆ Software version no.: Windows client utility version number.

Network Status:

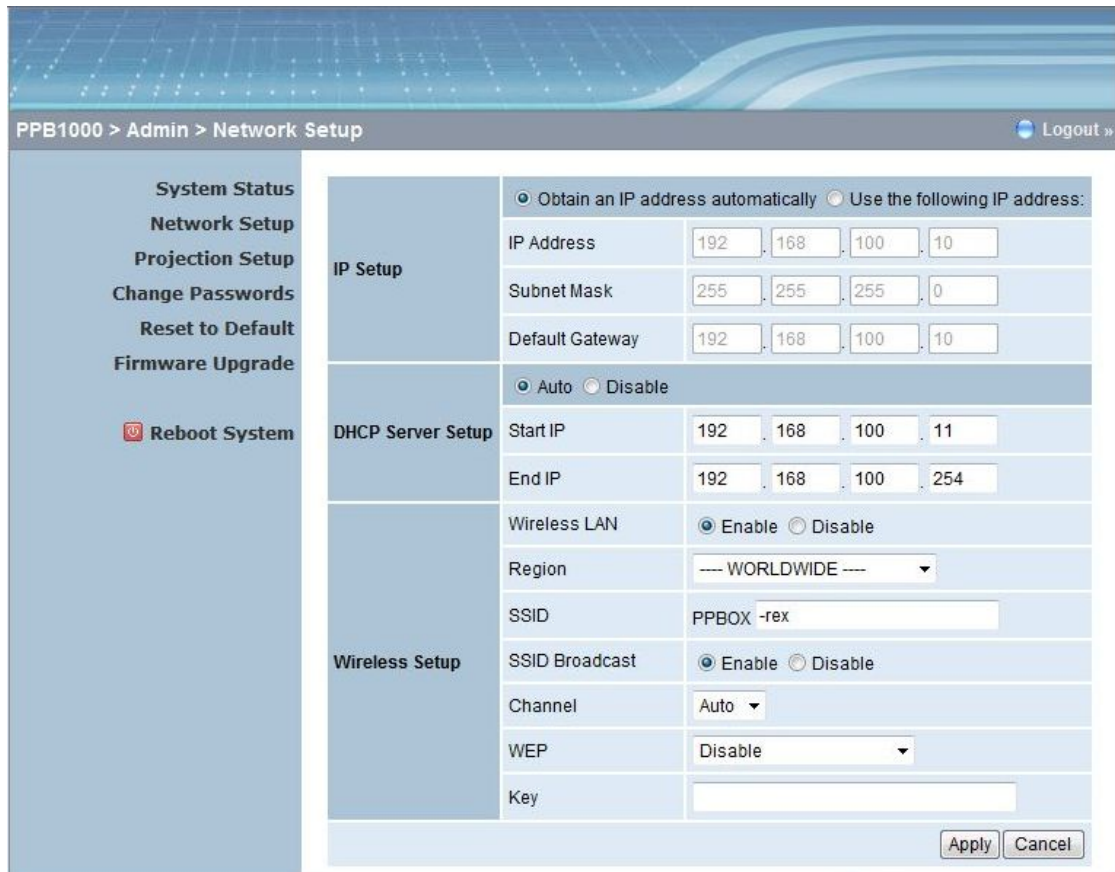
- ◆ IP address : IP address of PPbox device.
- ◆ Subnet Mask : subnet mask
- ◆ Default Gateway : default gateway
- ◆ Wireless MAC address : wireless MAC address
- ◆ Wire MAC address : wire MAC address

Connection Status:

- ◆ Projecting status: which is "Waiting for projecting" or "Projecting"
- ◆ Total Users: It shows how many users login into PPbox box.

6.4. Network Setup

There are many kinds of operating configurations as below.



< Auto-Configuration Network Setup >

The default setting of the PPbox box is DHCP client. When the PPbox box is connected to a LAN that already has a DHCP server present, the PPbox box takes an IP address assigned to it by the server. When the PPbox box is connected to a LAN that does not have a DHCP server, the PPbox box becomes the DHCP server in the network.

< IP Setup >

You can select “obtain IP address automatically” or “Use the following IP address”

- ◆ IP Address: The default value is 192.168.100.10.
- ◆ Subnet Mask: The default value is 255.255.255.0
- ◆ Default Gateway: The default value is 192.168.100.10

<DHCP Server Setup >

You can select “auto(Enable/Disable DHCP Server” or “Disable”

- ◆ Start IP: The start IP address of DHCP Server.
- ◆ End IP: The end IP address of DHCP Server.

< Wireless Setup >

- ◆ Wireless LAN: you can select “Enable” or “Disable”
- ◆ Region: default value is “Worldwide”.
- ◆ SSID: SSID string, max. Length is 32 bytes.
- ◆ SSID Broadcast: you can select “Enable” or “Disable”

- ◆ Channel: to set fixed channel or Auto. The "Auto" means after power on PPbox, it will scan all of wireless channel and select clear one channel automatically.
- ◆ WEP: you can Disable WEP key or select one of 64bit or 128bit in ASCII or HEX string.
- ◆ Key: If WEP is enabled, you have to set key value according to WEP mode you selected.

<Apply >: press button to select this mode

<Cancel>: press button to abort action.

<Back>: Back to Operating mode main menu

6.5. Projection Setup



<Video Output>: Default setting is **Auto**. If using default setting, the device will automatically detect which connector is used and automatically switch to best resolution. Otherwise, you can specify the output to use manually.

(Please not that improper setting may cause problem displaying images on your TV!)

<Color Depth>: Provide PPbox output with 16bit or 32 bit color depth. It depends on your PC settings.

<Screen Refresh Rate>: This is VGA output refresh rate, provides 60 Hz and 75Hz to suit for different kinds of projectors.

<Apply> : Confirmation and Save modifications

<Cancel>: Cancel all the modifications

6.6. Change Passwords

The screenshot shows the 'Change Passwords' page in the PPB1000 Admin interface. The breadcrumb trail is 'PPB1000 > Admin > Change Passwords'. A 'Logout' link is in the top right. A left sidebar contains menu items: System Status, Network Setup, Projection Setup, Change Passwords (highlighted), Reset to Default, Firmware Upgrade, and Reboot System. The main content area is titled 'Admin' and contains two input fields: 'Enter New Password' and 'Confirm New Password', followed by an 'Apply' button. The footer contains the text 'Copyright © 2006 All rights reserved.'

<Enter New Password>: enter new password you want.

<Confirm New Password>: double confirm new password.

<Apply>: Confirmation and Save modifications.

6.7. Reset to Default

The screenshot shows the 'Reset to Default' page in the PPB1000 Admin interface. The breadcrumb trail is 'PPB1000 > Admin > Reset to Default'. A 'Logout' link is in the top right. A left sidebar contains menu items: System Status, Network Setup, Projection Setup, Change Passwords, Reset to Default (highlighted), Firmware Upgrade, and Reboot System. The main content area features a yellow warning triangle icon, the title 'Reset to Default', and the text 'This will restore the device to the factory default settings.' Below this is an 'Apply' button. The footer contains the text 'Copyright © 2006 All rights reserved.'

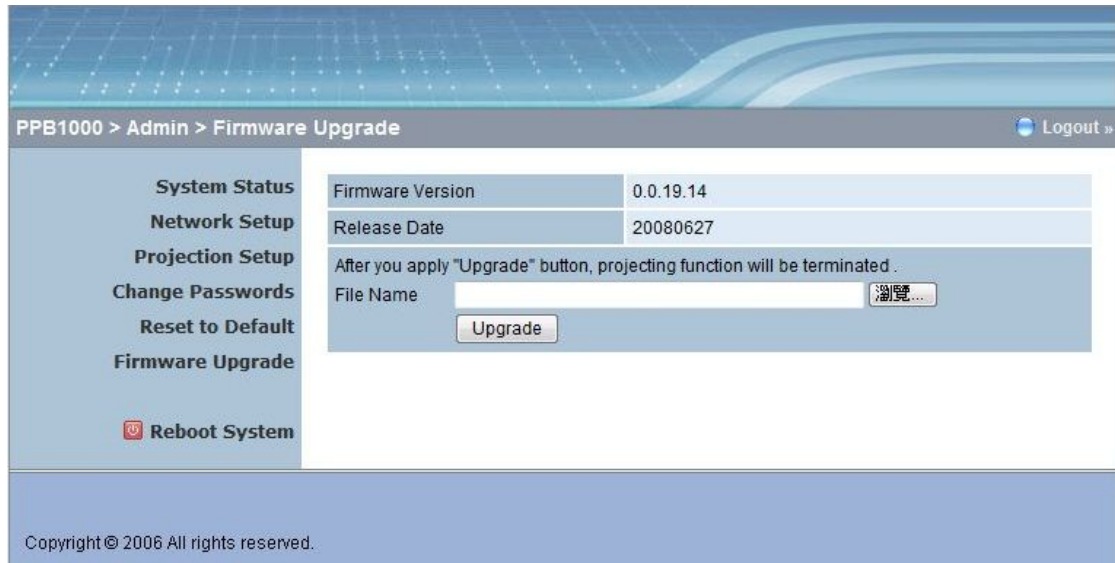
*** Click **[Reset to Default]** button to restore factory default settings.

<Apply>: Confirmation and action.

*** Another way to restore Factory Default Settings, Follow below procedures.

- ◆ Power off PPbox.
- ◆ On the rear panel, press **[Reset]** button and **Hold**.
- ◆ Turn on PPbox box.
- ◆ Wait for over 10 seconds and relief **[Reset]** button.
- ◆ It will take effect to restore factory default settings.

6.8. Firmware Upgrade



PPB1000 > Admin > Firmware Upgrade Logout »

System Status	Firmware Version	0.0.19.14
Network Setup	Release Date	20080627
Projection Setup	After you apply "Upgrade" button, projecting function will be terminated .	
Change Passwords	File Name	<input type="text"/> <input type="button" value="Browse"/>
Reset to Default	<input type="button" value="Upgrade"/>	
Firmware Upgrade		

Copyright © 2006 All rights reserved.

*** Click **[Firmware Upgrade]** button to upgrade firmware.

- ◆ First you have to get latest firmware file from your vendor.
- ◆ Click **<Browse>** to specify file name of the new firmware to upgrade.
- ◆ Click **<Upgrade>** to start.
- ◆ A warning message shown and count down counter on the screen.
- ◆ After a few minutes, the device should reboot automatically when upgrade is completed.
- ◆ If the device did not reboot in 15 minutes, please manually restart PPbox box.



Warning: Don't power off PPbox while firmware upgrade in progress, otherwise will cause your Box doesn't work and have to return device to your vendor for fixing.

6.9. Reboot System



*** Click **[Reboot System]** button, to restart system
<Reboot>: reboot system automatically.

6.10. Logout



*** Click **[Logout]** button, to back Web home page.

7 Appendix: PPbox Remote Control



	Mute		Volume Up		Volume Down		Quit MyPC
	Stop / Back		Up / Fast Forward		Z2TV / Info		Page Up
	Left / Previous		Play / Pause / Enter		Right / Next		Page Down
	Left Mouse Button		Down / Fast Rewind / Rotate Photo		Right Mouse Button		Space
	Move Cursor		Move Cursor		Move Cursor		Go to Favorites
	Move Cursor		Left Mouse Button		Move Cursor		Dig / Add to Favorites
	Move Cursor		Move Cursor		Move Cursor		Bury / Remove from Favorites